



CAMP EXCHANGE USA

WELCOME TO CAMP EXCHANGE USA!

SESSION 2
WORKING ON CAMP



We will cover

- First few days at camp
- Social Security Number, Employment Forms, Taxes
- Camp rules and early departures
- What to expect at camp
- Questions?

First Few Days at Camp

- Staff training / Pre-camp orientation
- Homesickness
- Adjusting to camp life



Dealing with Culture Shock

- **Jetlagged?** First time in U.S.?
- **Excitement-** Everything is new, lots of positive energy surrounding you
- **Frustration-** Exhaustion, busy schedule, no private time, different eating habits, feeling left out?
- **Adjustment-** campers arrive, routine schedule, putting others first
- **Feeling at home-** enjoying unique culture, high functioning, preferring camp life to the rest of the world.

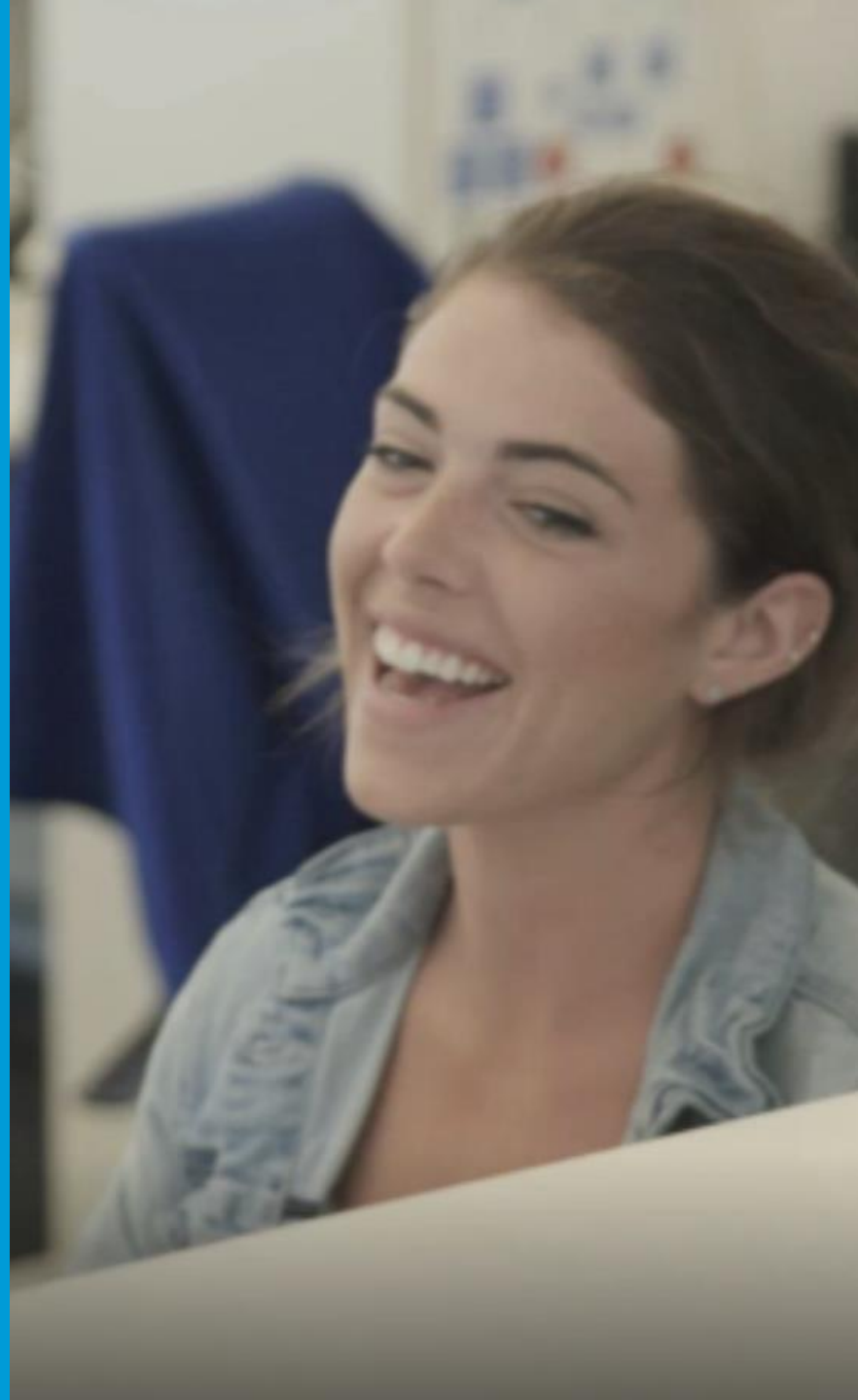
Having a hard time adjusting?

Call CIEE at 1-888-268-6245

Call CIEE

1-888-COUNCIL
1-888-268-6245

- Offer insurance support
- Assist with emergencies 24 hours a day
- Help if you get fired (Don't get fired!)
- Questions about your visa, program, etc.
- Talk about your experiences



Applying for a Social Security Card

All participants are required to apply for a Social Security Number

Apply 2-5 days from registering in SEVIS

To apply, you will need to bring:

- Original DS-2019 form
- Completed Social Security application
- Placement Agreement Form/Camp Co.
- Letter of Good Standing from CIEE



POCKET MONEY



- HOW DOES IT WORK
- NON-COMPLETION FEE

Taxes

Taxes should be deducted from your paycheck

- ALL participants - Federal Income Tax (generally taxed at a rate of 10%)
- SOME participants – State & Local Income Tax (different for each state)

Taxes you DO NOT need to pay

- Medicare
- Social Security (FICA)
- Federal Unemployment Taxes (FUTA)

What do I do?

- Complete your W-4 Form and submit it to your employer.
- Check that taxes are withheld from your paycheck.
- If you have any questions – call CIEE.

FOLLOW THE RULES

REASONS FOR EARLY DISMISSAL

- Inappropriate behavior or language in front of campers
- Inappropriate behavior or language in front of counselors
- Drinking alcohol or smoking at camp
- Returning to camp drunk
- Poor work ethic
- Breaking camp curfew
- Any illegal activity on or off camp property

Early Departure

Whether you choose to leave camp early or are fired:

- CIEE will assist you in getting to the airport and getting home safely
- You will forfeit the remaining amount of your pocket money still owed to you
- You will be responsible to re-pay CIEE Non-Complete Fee prior to leaving camp. (pro-rated portion of camp fee to CIEE)
- Your J-1 Camp Counselor visa is ended and you will not be eligible for the 30 day travel period. You must depart the USA immediately.

What is so different about life at camp?

- Location
- Busy Schedule
- Food and mealtimes
- Bunk Life
- Wildlife
- Small Community





LOCATION



BUSY SCHEDULE

Typical Camp Day

- Reveille/Wake up
- Breakfast in the Dining Hall
- Cabin Cleanup
- Flag Raising
- Morning Activity instruction
- Open swim/waterfront
- Lunch
- Rest Hour (mail call!)
- Afternoon Activity instruction
- Dinner
- Evening Activities
- Cabin time
- Taps/Bed



BEING A CAMP COUNSELOR



FOOD AND MEAL TIMES



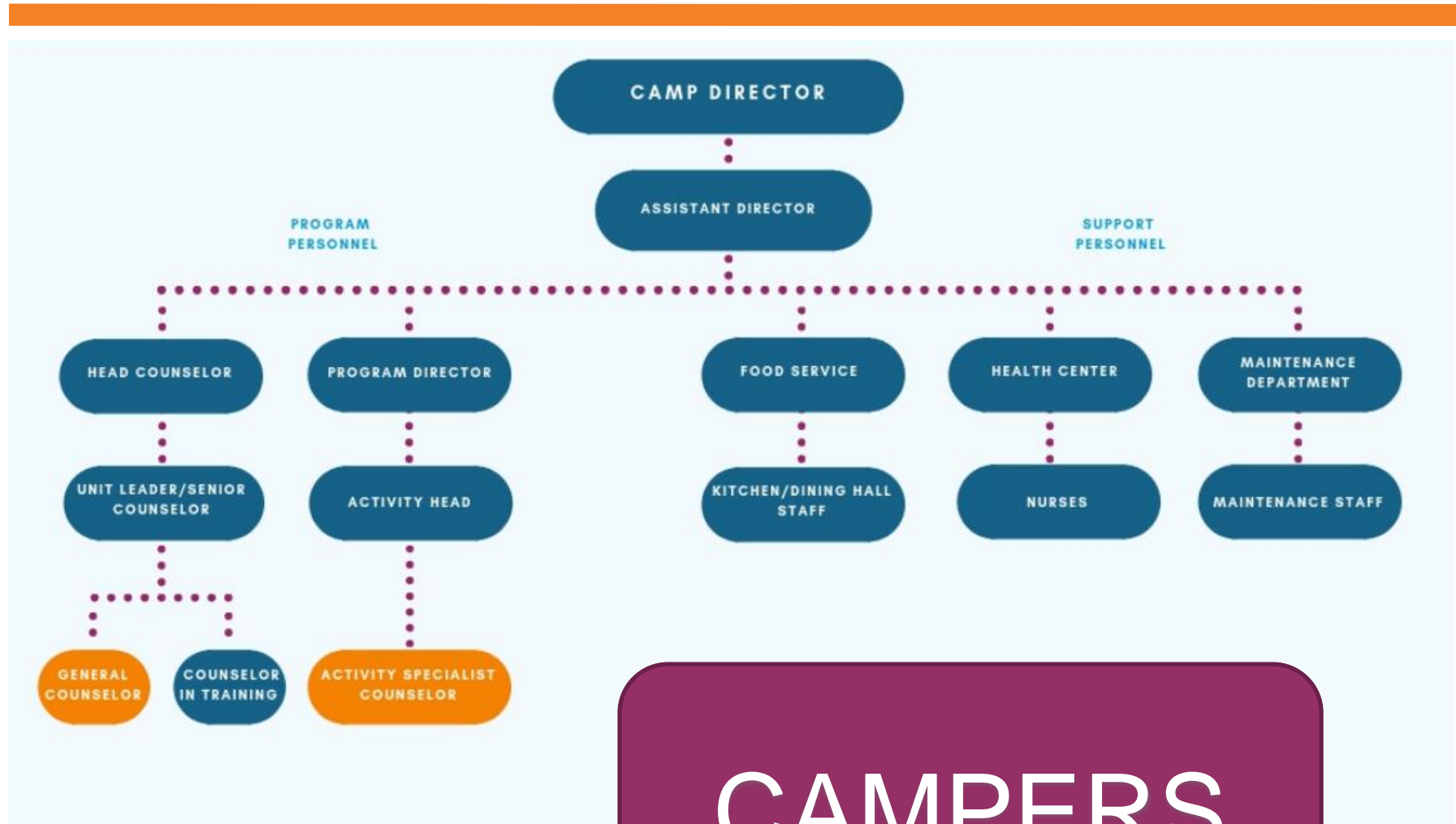
BUNK LIFE



WILDLIFE



Small community





CAMPERS



FELLOW STAFF

More Tips For Success

- Let out the child inside you
- Motivation
- Catch kids being good
- Ask for help

AFTER CAMP



Where can I go, what can I do, for how long?

Congratulations, you just completed one of the most challenging and yet rewarding experiences of your life!

- Go See the USA!
- You have 30 Days to travel anywhere in the USA

Remember

- not eligible to work at camp or anywhere else.
- cannot leave and re-enter the USA during this time period on the J1-Camp Counselor visa.



Security – The Bigger Picture



If something goes wrong while you are traveling, please remember to:

1. Contact home
2. Contact CIEE
3. Monitor Social Media

A stylized world map in a light blue color, overlaid on a darker blue background. The map shows the outlines of continents and is composed of a grid of small squares.

400,000+
CIEE ALUMNI
AROUND
THE WORLD

**We want to hear
from you!**

#CIEECAMP

HAVE A GREAT SUMMER



**THANK
YOU!**